



Bharat Technoplast

BHARAT TECHNOPLAST PVT LTD

**Manufacturer of Injection Moulds and Injection Moulded
Thermoplastic Components**

Certified IATF 16949:2016 – Plastic Injection Moulding and Toolroom

Established in 1992, Bharat Technoplast Pvt. Ltd. (BTPL) is a leading mould-making and injection moulding company. Led by our experienced Managing Director, Mr. Bharat Shah, with over 30 years in plastic injection moulds up to 1600 tonnes, we've earned a reputation for precision and innovation. Our state-of-the-art facilities and customer-centric approach make us a trusted partner for complex moulding projects. BTPL's legacy of excellence continues to drive our commitment to quality and client satisfaction.

YEAR	COMPANY'S MILESTONES
1992	COMPANY ESTABLISHED & STARTED BUSINESS OF PLASTIC INJECTION MOULDING FOR 2-WHEELER & ELECTRICAL COMPONENTS
1996	START OF PLASTIC MOULD DEVELOPMENT FOR WHITE GOODS INDUSTRY.
1999	ESTABLISHED MOULD MAKER WITH INSTALLATION OF VMC & EDM MACHINES.
2004	SHIFTED FOCUS TO AUTOMOBILE MOULD DEVELOPMENT FOR MAJOR TIER 1 AND OEM IN INDIA.
2013	COMPANY NAME CHANGED TO BHARAT TECHNOPLAST PVT LTD FROM BHARAT INDUSTRIES
2014	2 NEW INJECTION MOULDING PLANT AT SANAND, AHMEDABAD AND PUNE, CHAKAN.
2019	NEW INJECTION MOULDING PLANT AT SANAND, AHMEDABAD SMALLER TONNAGE MACHINE 100T – 450T
2022	TOTAL INJECTION MOULDING MACHINES 52 NOS FROM RANGE OF 80-1300T
2023	PLANNED TO SET UP NEW MOULD SHOP FOR RANGE OF 500T TO 2300T AT CHAKAN, PUNE.



MISSION

Our company is committed to excellence in every facet of our operations. We leverage our experience and adhere to the highest industry standards to manufacture precision components and products. Our mission is to deliver superior quality, reliability, and innovation to our clients while fostering a culture of integrity, sustainability, and continuous improvement in everything we do

VISION

we envision a future where cutting-edge technology seamlessly integrates with everyday life, enhancing efficiency and fostering innovation. Guided by our commitment to creativity, integrity, and sustainability, we aspire to be at the forefront of technological advancements, driving positive change in the industry and earning recognition as a global leader in innovative solutions.

VALUES

- Quality and Excellence
- Innovation and Technology Leadership
- Customer centric focus
- Integrity and Ethics
- Collaboration and Teamwork
- Continuous Improvement



MANUFACTURING FACILITIES

BTPL HEAD OFFICE (Unit 1)

91-B/C, GOVT. INDL ESTATE,
CHARKOP, KANDIVALI (W),
MUMBAI. PIN CODE- 400 067.INDIA.

BTPL (Unit 2)

PE 60 ROAD NO 21,RASULPURA VILLAGE,
BOL GIDC, SANAND

BTPL (Unit 3)

GAT No. 305, BEHIND WINDALS PRECISION,
WAGHAJAI NAGAR, KHARABWADI,
CHAKAN, TAL. KHED, PUNE- 410501

BTPL(Unit 4)

PE 59, RASUPURA VILLAGE, BOL GIDC,
SANAND
AHMEDABAD
INDIA

BTPL (Unit 5)

Gat No.347, Bhamboli, Post – Vasuli. Tal -
Khed Dist. - Pune





Bharat Technoplast

MANUFACTURING FACILITIES



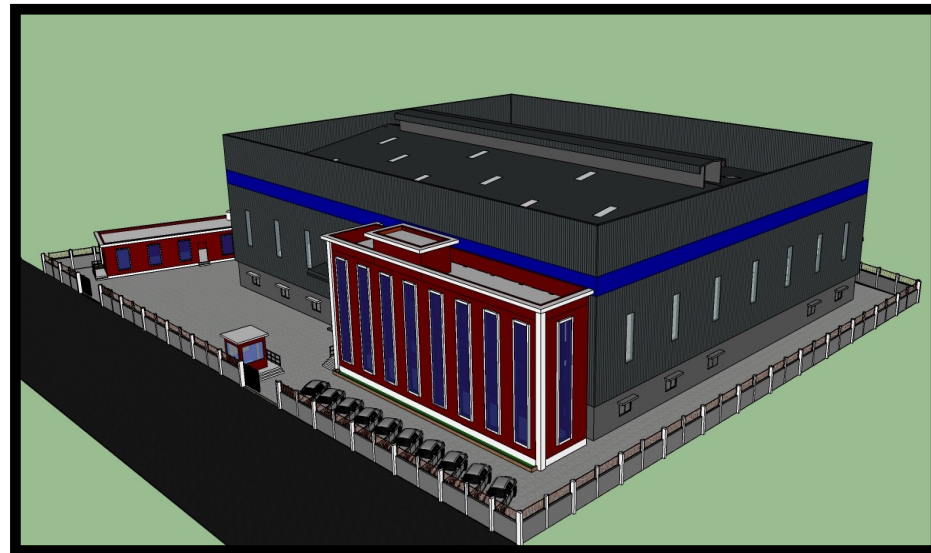
ToolRoom- Mumbai (Unit 1)



Injection Moulding Unit-Sanand (Unit 2 & 4)



Injection Moulding Unit-Pune Chakan (Unit 3)



ToolRoom- Pune Bhamboli (Unit 5)



AWARDS & RECOGNITIONS

Bharat Technoplast



Whirlpool Of India Limited

Best Supplier For Mould Development (2005)



Lear Corporation

New Development & Product Launch For B515 Project (2012)



Tata Johnson Controls

Best Innovation(va-ve) (2012)



Lear Automotive India Pvt Ltd

New Product Development & Product Launch (2013)



Mahle Behr India Ltd

Excellence In Npd 9 (2014)



Yangfeng Automotive Ltd

Excellence In Supplier Performance (2017)



TACO

Customer Delight



MMM

Best Supplier Plastic Commodity For Sanand Plant (2017 & 2018)



IATF Certification for Mumbai Plant



IATF Certification for Pune Plant



IATF Certification for Sanand Unit



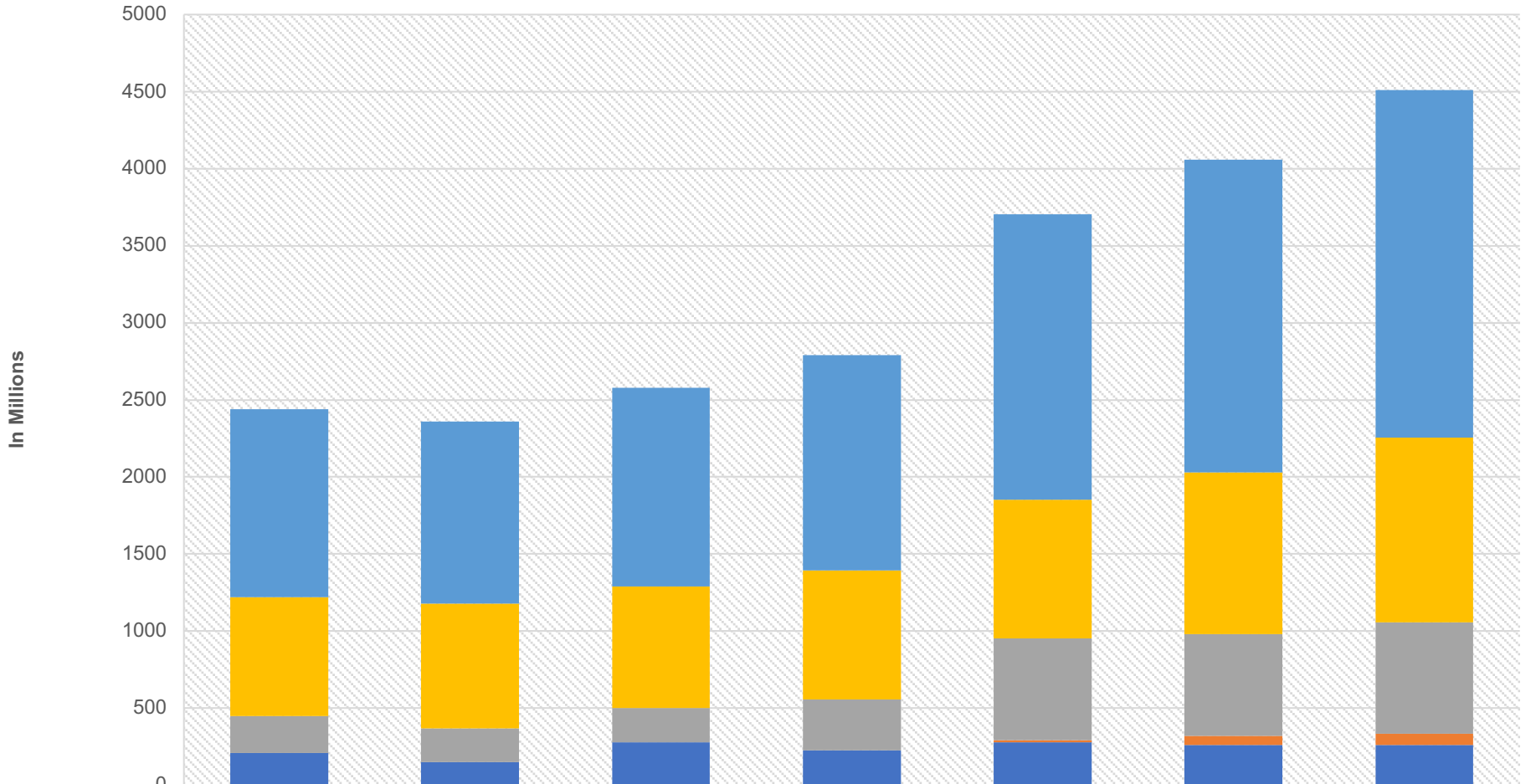
ISO 14001:2015



ISO 45001:2018



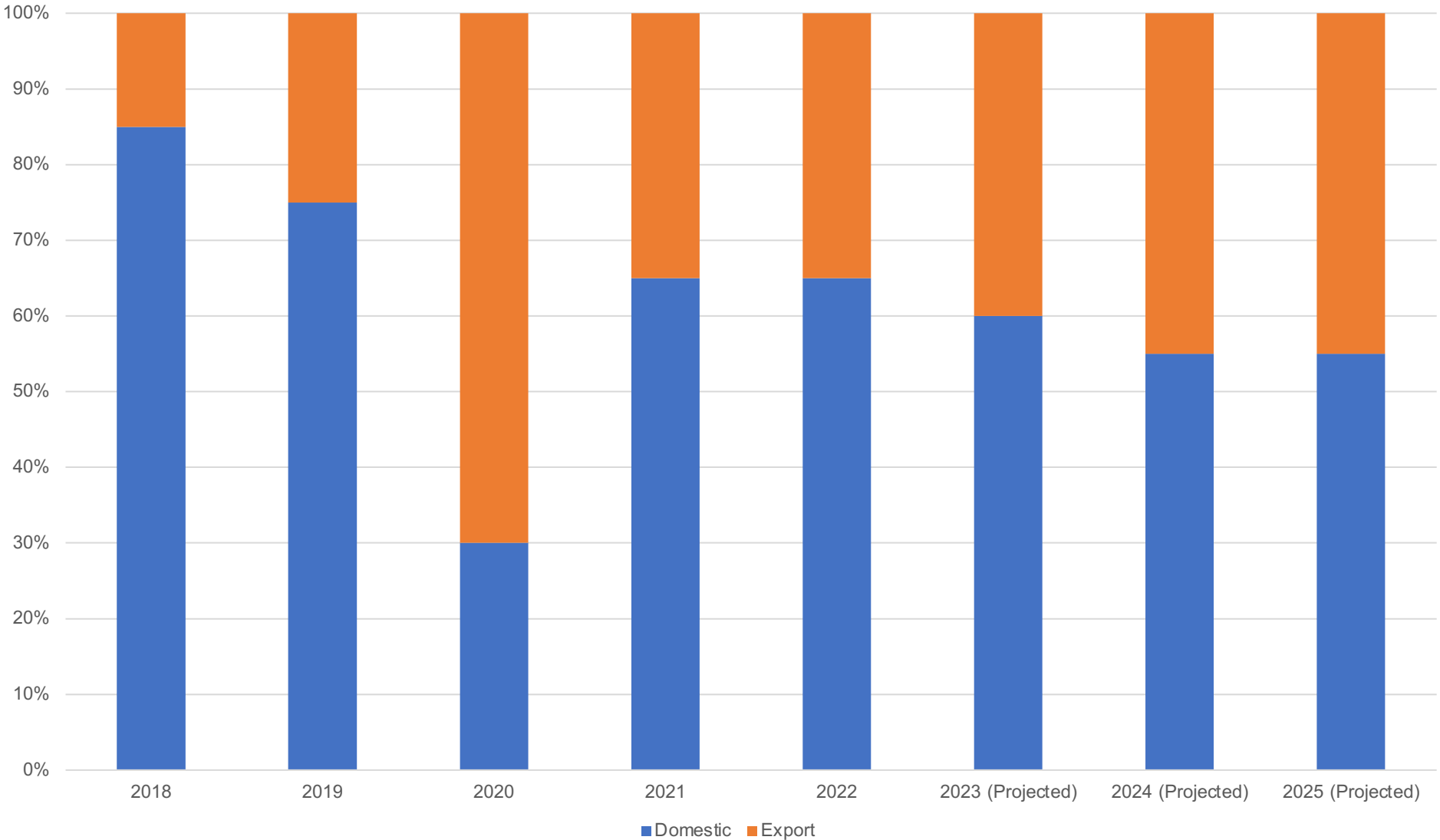
Sales



	2018-19	2019-20	2020-21	2021-22	2022-23	2023-24	2024-25
Total	1220	1180	1290	1395	1852	2030	2255
IMM Sanand	770	810	790	840	900	1050	1200
IMM Chakan	240	220	220	330	660	660	720
Toolroom Pune	0	0	0	0	12	60	75
Toolroom Mumbai	210	150	280	225	280	260	260



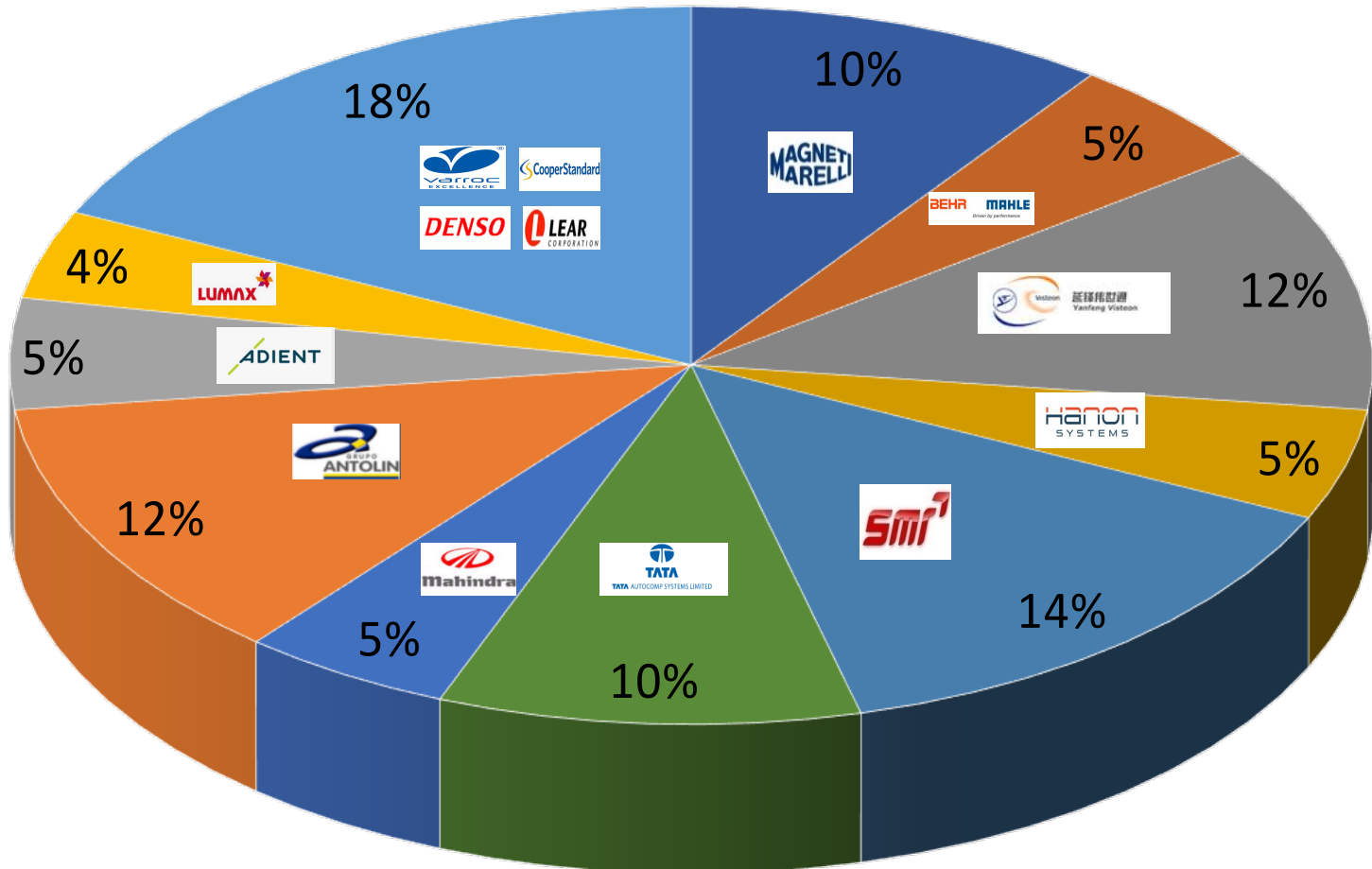
Mould (Domestic & Export Data)





CUSTOMER BUSINESS SHARE

YEAR-2022-23



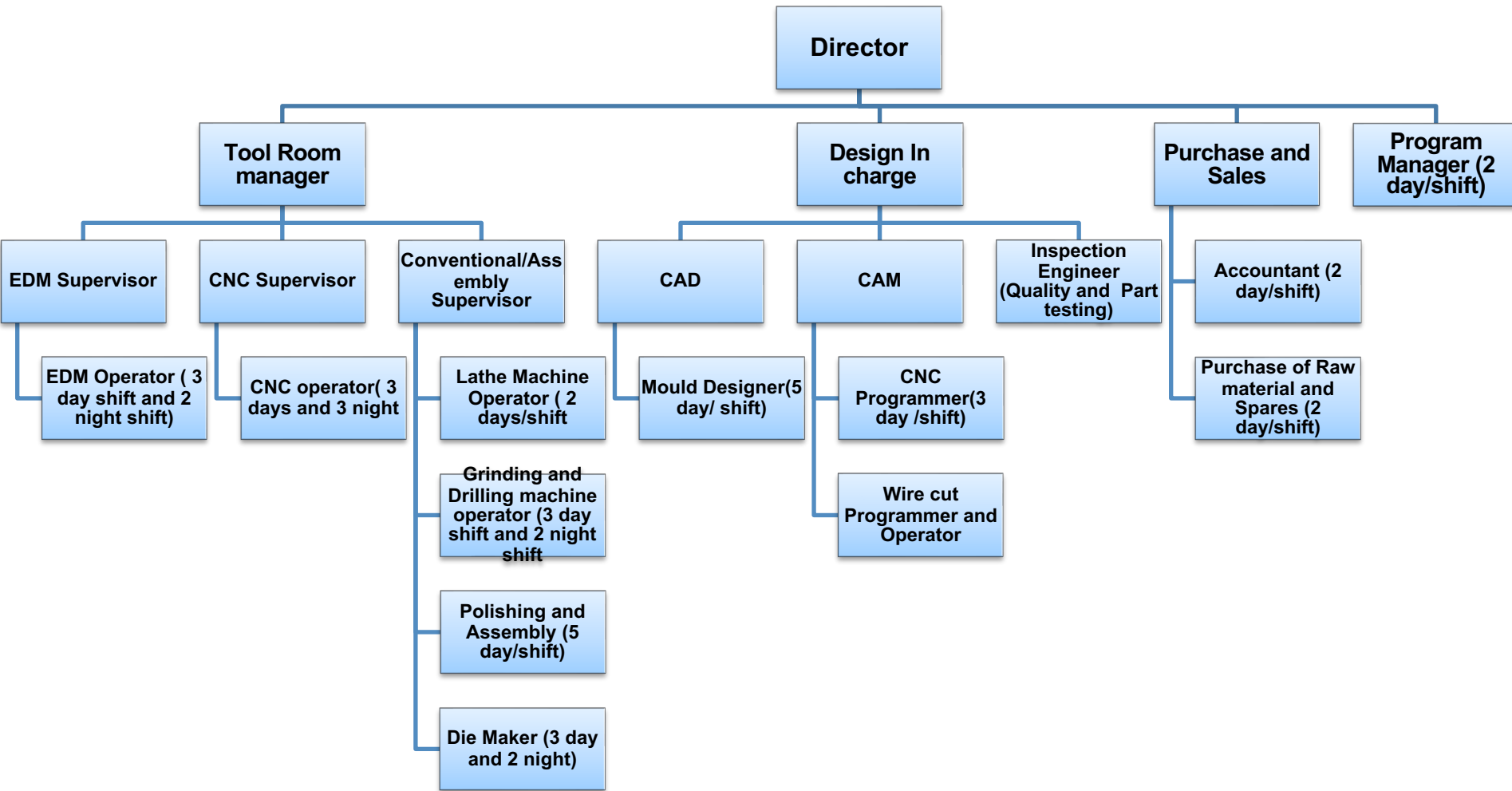


Our Valued Clientele





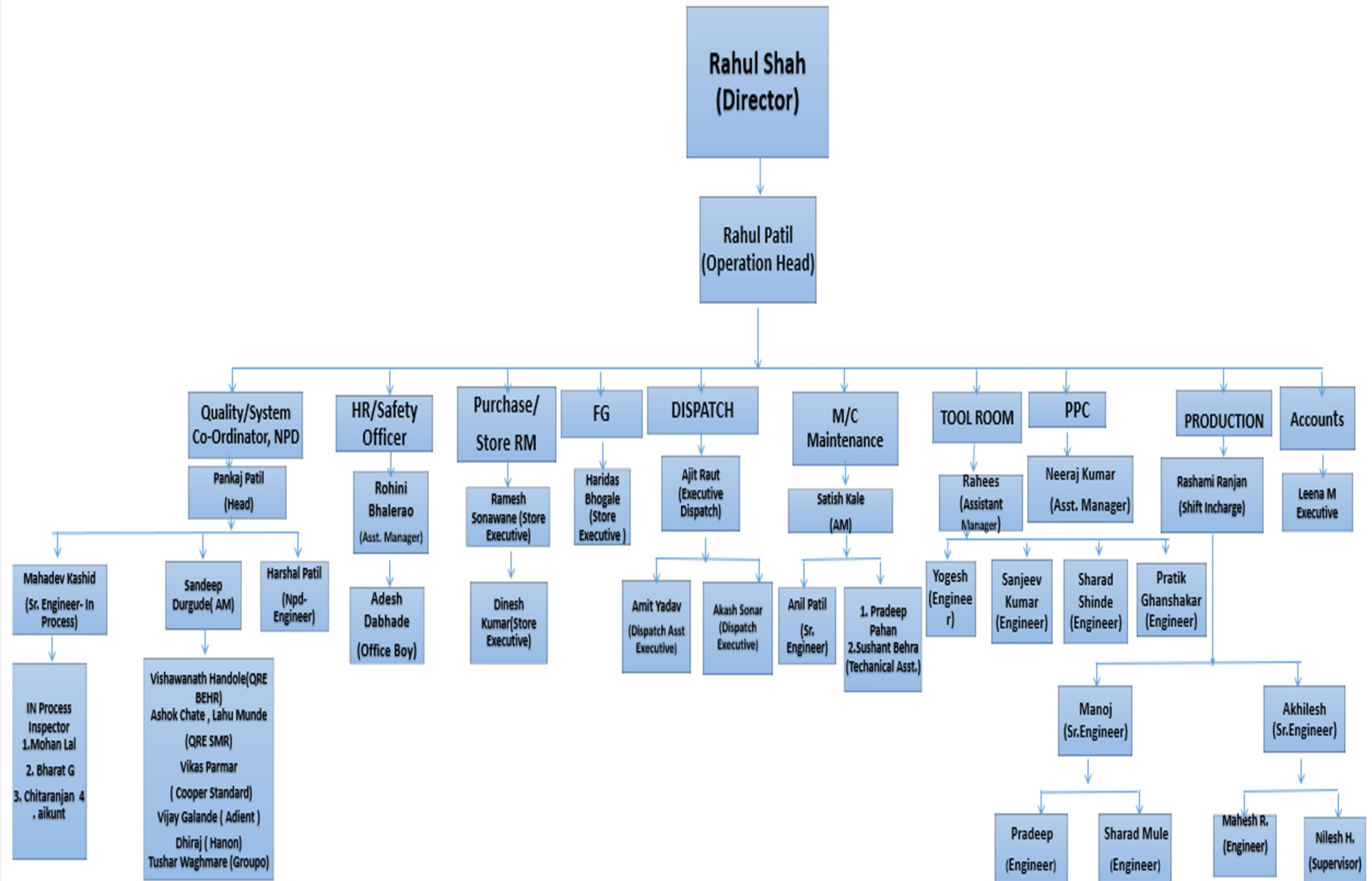
ORGANISATIONAL MATRIX TOOLROOM





ORGANISATION MATRIX - INJECTION MOULDING

Bharat Technoplast



TOOL MANUFACTURING - RESOURCES

Content	In-House	Outsourced
Design Hours per year	10200 Hrs	NO
Machining Hours	65000 Hrs	Yes
Tool Assembly hours	12000 Hrs	
Mould Trial Machines	80-1000T	1000T and above
Mould Flow Analysis	-	Yes
CMM	-	Yes
UG V.8	5 seats	Yes
Delcam 10	3 seats	Yes



NUMBER OF MOULDS / YEAR	150+ tools
MAXIMUM MOULD SIZE	TOOL MANUFACTURING
MAXIMUM MOULD WEIGHT	40 Ton
CORE AND CAVITY MATERIAL	1.2738, 1.2738HH, 12738 HHGH, 1.2711, 1.2344, 1.2316. STAVAX.
MOULD BASE MATERIAL	C- 45, 1.2311
HOT RUNNER SYSTEM	SYNVENTIVE, YUDO, mould Masters, HRS INGLASS
EJECTION SYSTEM	OTPL, FIBRO, CUMSA.

Moulds For:

- **Automotive: Door panels, shroud, Cover, grill, Console, Cladding, etc**
- **Consumer Electronics**
- **2 Wheeler fender, Cover...**
- **Lighting housing**
- **Mirror Housing**

MACHINE SET UP - TOOL MANUFACTURING MUMBAI & PUNE PLANT

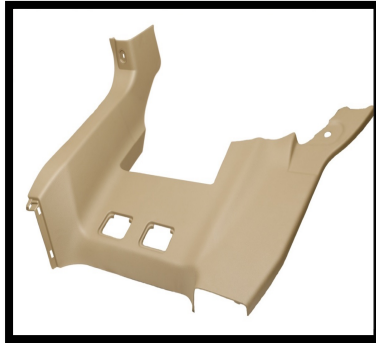
Machine type	Location	No of machines	Specifications	Make	Year of installation
Vertical Machining Centre	Mumbai	1	2200x1000x750	Feeler	2007
		1	650x500x450	Makino	2011
		1	900x500x450	Makino	2009
		1	1050x610x610	BFW	2005
		1	700x450x450	BFW	2005
		1	650x400x400	BFW	2017
	Pune	1	450x300x300	BFW	2018
		1	4200x2000x1200 mm	BFW Virat 2040	2025 (Planned)
		1	3200x1500x870 mm	BFW Virat 1530	2023
		2	3200x1000x820 mm	BFW Virat 1030	2025 (Planned)
2		2000x810x800 mm	BFW BMV80	2023	
5 axis VMC	Pune	2	1000x510x500 mm	BFW BMV50	2025 (Planned)
		1	2000x2500x1050 MM	Makino V100S	2025 (Planned)
		1	2200x1500x800 MM	Makino V90S	2023
Graphite VMC	Pune	1	1300x1000x600 MM	Makino V80S	2023
EDM Machine	Mumbai	3	800x450x500 mm	Cosmos CVM640	2025 (Planned)
		1	1600x800x600	Chmer	2005
		1	1200x600x500	Chmer	2008
		1	500x350x300	Charmilles	2009
		1	500x350x300	Electronica	2006
EDM Machine	Pune	1	500x300x300	Electronica	2004
		1	4000x1900x1000 mm	HSPK HG280 with ATC	2025 (Planned)
		2	3500x1900x850 mm	HSPK HG200 with ATC	2023
		2	1800x1000x600 mm	HSPK HG100	2025 (Planned)
Deep Hole Drilling	Pune	2	1400x850x500 mm	HSPK HG70	2025 (Planned)
Lathe Machine	Mumbai	1	2200x1600x800 mm	WIM Camder 2.6S Gundrilling	2023
Radial Drilling Machine	Mumbai	2		Indian Make	2002-2010
Surface Grinding	Mumbai	3		Indian Make	2002-2010
Surface Grinding	Mumbai	2		Indian Make	2002-2010
Surface Grinding	Pune	2		Indian Make	2023
Angle Head	Mumbai	1		Alberti Umberto Italy	2019
Die Spotting Press	Mumbai	1	160T	SXKH	2019
	Pune	1	2500x2000x2400 mm	HMG 350T SXKH	2023
		1	1400x1000x1470 mm	HMG 120T SXKH	2023
EOT Crane	Mumbai	2	5T	Indian Make	2005
EOT Crane	Mumbai	2	10T & 15T	Indian Make	2014
EOT Crane	Pune	2	40/15T	Indian Make	2023
EOT Crane	Pune	2	15T	Indian Make	2023
Goliath Crane	Pune	2	10T & 15T	Indian Make	2023
CMM	Pune	1	1200x2000x1000 mm	Accurate Mega	2023
VMI	Pune	1	460x320x200 mm	Accurate	2023
IMM	Pune	1	NA	Milacron C2300T	2023
IMM	Pune	1	NA	Milacron C1500T	2023
IMM	Pune	1	NA	Milacron 850T	2023



MOULD DEVELOPED FOR FOUR-WHEELER PARTS



Door Trim



Quarter Trim



Plenum Applique



Front Grill

Part Size	895 X 1011 X 162	963x750x348	1520x251x165	1520x251x165
MOULD WEIGHT	13 TON	13 TON	9.5 TON	9.5 TON
Manufacturing LEAD TIME	85days	75 days	80 days	80 days
Sequential	Air Pneumatic Type 7 Drop-open	Hydraulic Type 4 Drop	Hydraulic Type 3 Drop	Hydraulic Type 5 Drop
Hot Runner System	YUDO Make 7 Drop	YUDO Make	Synventive Make	Synventive Make
Injection Machine	2000 T	1300 T	1300 T	1300 T



Bharat Technoplast

MOULD DEVELOPED FOR FOUR-WHEELER PARTS



RR DR Cladding Outer LH
RH



IP Centre Fascia



Top Grill



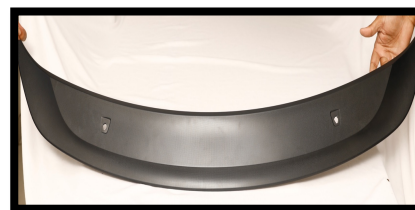
B Pillar Lower



Console



Trunk Lid



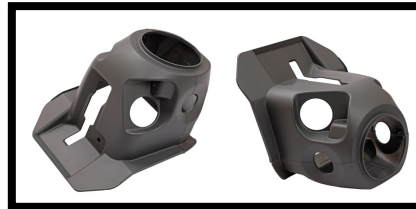
Hood Trim



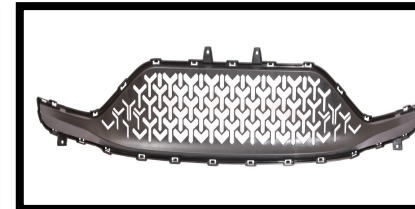
Front Door Trim



Side Panel LH RH



Steering Column Shroud
Lower and Upper LHD



Bumper Grill lower



Front Fog Housing

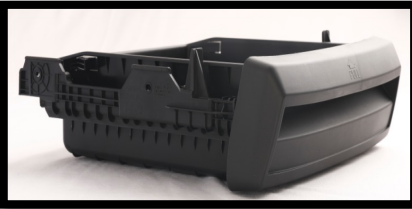


Bharat Technoplast

MOULD DEVELOPED FOR FOUR-WHEELER PARTS



Trunk Inner Lens



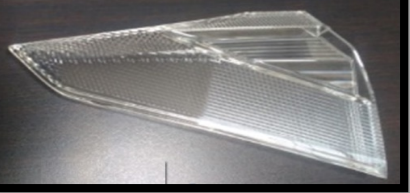
Storage Bin



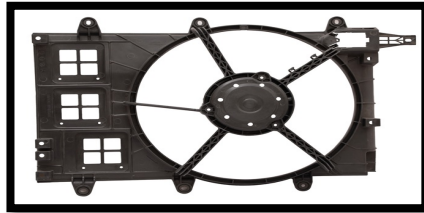
Central Bezel



Cargo Box



Trunk Outer Lens



Shroud



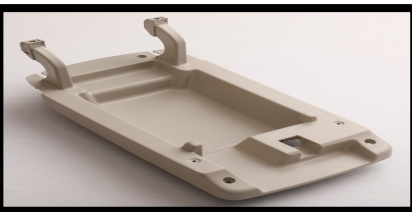
Armrest Bezel



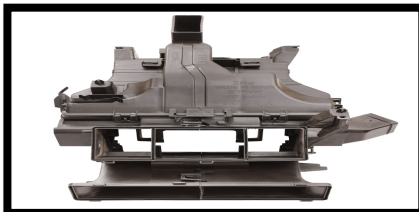
Side Shield



Fender Housing



Armrest Substrate



HVAC Housing



Overhead Console



MOULD DEVELOPED FOR TWO-WHEELER PARTS



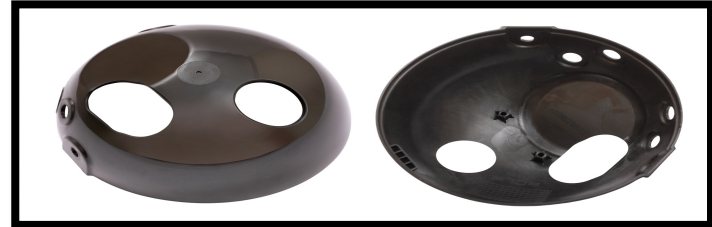
Side Panel LH RH



Rear Fender



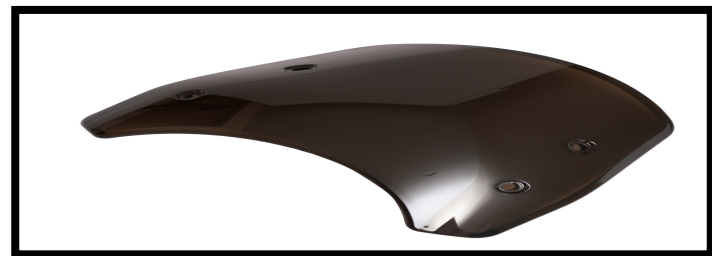
Tail Cover



Headlamp Cover

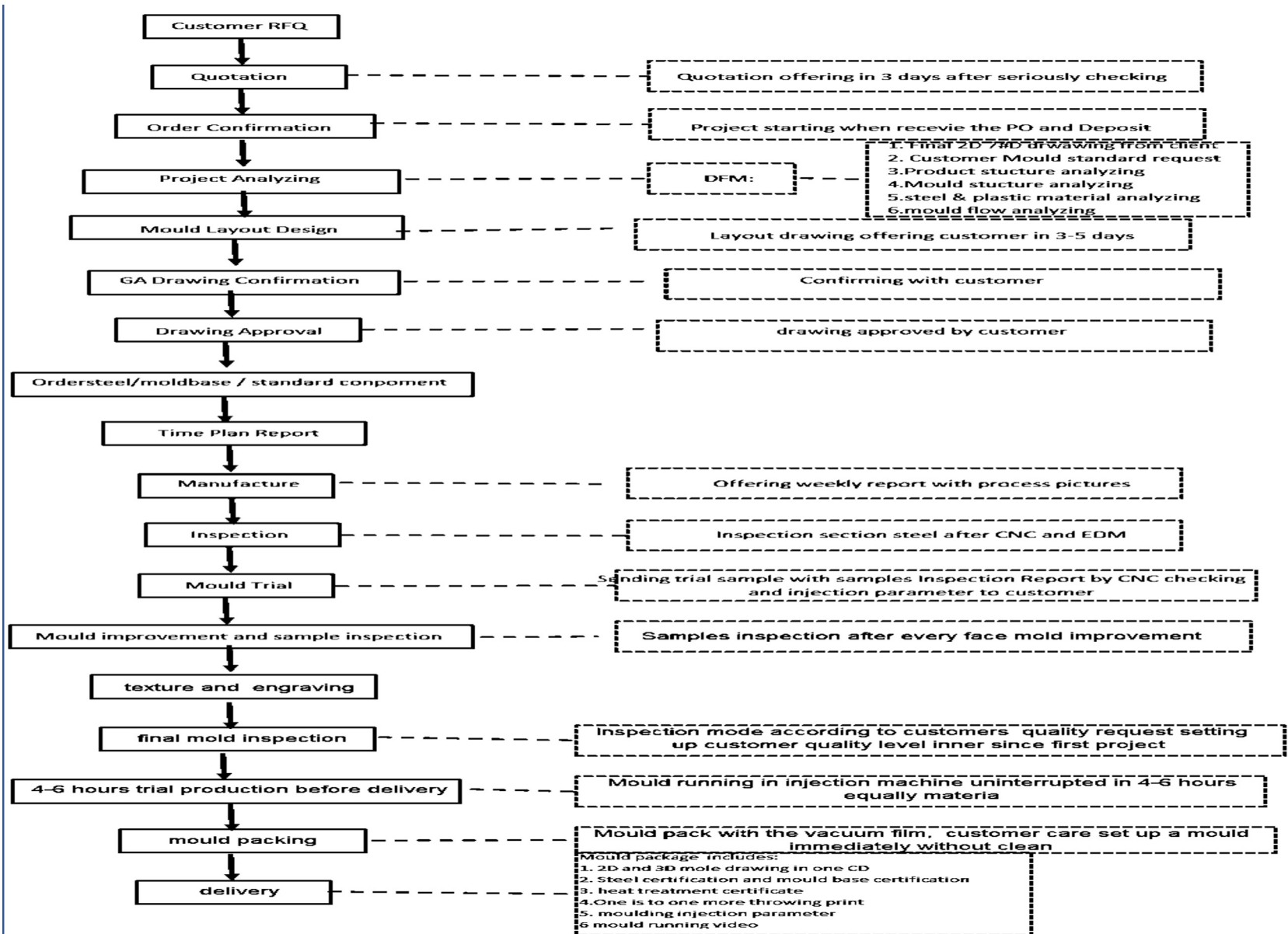


Rear Fender Front



Visor Small

Quality Plan and Quality Process





INJECTION MOULDING INFRASTRUCTURE



Bharat Technoplast

INJECTION MOULDING UNIT – SANAND





Bharat Technoplast

INJECTION MOULDING UNIT – SANAND





INJECTION MOULDING MACHINE - SANAND

Sr No	Make	Tonngae	Sanand Location
1	Engel	120T	1
2	Engel	200T	2
3	Engel	300T	1
4	Engel	350T	1
5	Engel	450T	2
6	Milcron	100T	1
7	Milcron	150T	2
8	Milcron	200T	2
9	Milcron	250T	3
10	Milcron	350T	5
11	Milcron	450T	4
12	Milcron	500T	1
13	Milcron	650T	2
14	Milcron	850T	1
15	Milcron	1000T	3
16	Milcron	1300T	1
Total No of machines			32



Bharat Technoplast

INJECTION MOULDING UNIT – PUNE







INJECTION MOULDING MACHINE - PUNE

Sr No	Make	Tonngae	Pune Location
1	Engel	120T	1
2	Engel	160T	1
3	Engel	350T	1
4	Windsor	130T	1
5	Milcron	100T	1
6	Milcron	150T	1
7	Milcron	200T	1
8	Milcron	250T	2
9	Milcron	350T	3
10	Milcron	450T	4
11	Milcron	550T	1
12	Milcron	650T	2
13	Milcron	850T	1
14	Milcron	1000T	1
	Total No of machines		21



SR NO	IDENTIFICATION NO	DESCRIPTION	RANGE	MAKE	LOCATION	L.C. / Resolution	CALIBRATION FREQUENCY	CALIBRETION LOCATION	CALIBRATIC DATE	DUE DATE	ACCEPTAN CRITERIA	HISTORY CARD	INSTRUMENT LIST			
													Document No.: F:QA:CAL:11	Date of Original issue :02.02.2015	Rev.No:- L	Rev.Date :- 26.07.2021
Department - QA																
1	B16019125	Digital Vernier Caliper	0-200 mm	Mitutoyo	QA Lab	0.01 mm	1 Year	Calibration Lab	06.03.2021	05.03.2022	±0.02MM	001				
2	15237182	Digital Micrometer	0-25 mm	Mitutoyo	QA Lab	0.001 mm	1 Year	Calibration Lab	06.03.2021	05.03.2022	±0.002MM	003				
3	45168963	Digital Micrometer	0.25 mm	Mitutoyo	QA Lab	0.001 mm	1 Year	Calibration Lab	06.03.2021	05.03.2022	±0.002MM	004				
4	2124952	Lux Meter	0-50000 Lux.	Lutron	QA Lab	0.1/1 Lux	2 Year	Calibration Lab	28.06.2020	27.06.2022	±2 Lux	005				
5	BTPL/RG/02	Radius Gauge	R 0.5 to 13 mm	Mitutoyo	QA Lab	0.5 mm	3 Year	Calibration Lab	14.03.2019	13.03.2022	±0.05MM	006				
6	BTPL/WB/01	Weighing Balance	0.5g - 5 kg	seco	Shop Floor	0.5 gms	1 Year	Onsite	29.12.2020	28.12.2021	±0.02kg	008				
7	BTPL/WB/02	Weighing Balance	0 gms - 60kg	seco	Store	5/10 gms	1 Year	Onsite	08.03.2021	07.03.2022	±0.05kg	009				
8	BTPL/PPM/01	Push Pull Meter	0-20 Kgf	Imada	QA Lab	0.2Kgf	5 Year	Calibration Lab	14.03.2019	13.03.2024		010				
9	BTPL/SG/01	SLIP GAUGE SET	0.5 - 100 MM	YUZUKI	QA Lab	-	5 Year	Calibration Lab	16.03.2019	15.03.2024	±0.01 mm	011				
10	BTPL/IR-01	IR Thermometer	-30 - +500° C	Fluke	QA Lab	0.1 °C	1 Year	Calibration Lab	20.03.2021	19.03.2022	± 1 °C	012				
11	BTPL/DG/02	Digital Dial-02	0 - 12.7 mm	Mitutoyo	QA Lab	0.01 mm	2 Year	Calibration Lab	09.07.2021	08.07.2023	±0.01MM	014				
12	BTPL/DG/03	Digital Dial-03	0 - 12.7 mm	Mitutoyo	QA Lab	0.01 mm	2 Year	Calibration Lab	09.07.2021	08.07.2023	±0.01MM	015				
13	BTPL/TPG/01	Thread Gauge	M6*1 - 6H	Sai Gauge	QA Lab	-	3 Year	Calibration Lab	05.07.2019	04.07.2022		016				
14	BTPL/TPG/02	Thread Gauge	M4*0.7 - 6H	Sai Gauge	QA Lab	-	3 Year	Calibration Lab	05.07.2019	04.07.2022		017				
15	BTPL/PG/01	GO NO GO Gauge	5.00 ± 0.10	Harshman	QA Lab	-	3 Year	Calibration Lab	05.07.2019	04.07.2022	± 0.02	018				
16	BTPL/PG/02	GO NO GO Gauge	13.5 ± 0.10	Harshman	QA Lab	-	3 Year	Calibration Lab	05.07.2019	04.07.2022	± 0.02	019				
17	BTPL/FG/01	Feeler Gauge	0.03 to 1 mm	-	QA Lab	-	3 Year	Calibration Lab	05.07.2019	04.07.2022	± 0.02	020				
18	BTPL/HG/01	Height Gauge	0-600 mm	Insize	QA Lab	0.01 mm	1 Year	Calibration Lab	10.08.2021	09.08.2022	±0.05MM	021				
19	BTPL/WB/03	Weighing Balance	0.2 - 600 gms	seco	QA Lab	0.01 gms	1 Year	Calibration Lab	25.08.2021	24.08.2022	±0.02 gms	022				
20	BTPL/MFI-WT/01	MFI WEIGHT	2.16 Kg	International Equipments	QA Lab	-	3 Year	Calibration Lab	28.08.2019	27.08.2022		023				
21	BTPL/MFI-WT/02	MFI WEIGHT	3.8 Kg	International Equipments	QA Lab	-	3 Year	Calibration Lab	28.08.2019	27.08.2022		024				
22	BTPL/MFI-WT/03	MFI WEIGHT	5.0 Kg	International Equipments	QA Lab	-	3 Year	Calibration Lab	28.08.2019	27.08.2022		025				



23	BTPL/MFI-WT/04	MFI WEIGHT	5.0 Kg	International Equipments	QA Lab	-	3 Year	Calibration Lab	28.08.2019	27.08.2022		026
24	BTPL/MFI-WT/05	MFI WEIGHT	6.60 Kg	International Equipments	QA Lab	-	3 Year	Calibration Lab	28.08.2019	27.08.2022		027
25	BTPL/MFI-WT/06	MFI WEIGHT	10.0 Kgs	International Equipments	QA Lab	-	3 Year	Calibration Lab	28.08.2019	27.08.2022		028
26	BTPL/SP/01	Surface Plate	630x630	LUTHRA	QA Lab	-	3 Year	-	28.09.2019	27.09.2022	0 grade	029
27	BTPL/PG/01	Pin Gauge	15.00mm,14.10 mm,13.00 mm, 11.00 mm,(10.60, 10.50, 10.30, 10.20, 10.00) mm,(9.90, 9.40, 9.20,9.00) mm,7.50 mm, 6.20 mm, 5.50, 5.40, 5.00 mm, 4.40, 4.10 mm	Nidhar Engineering	QA Lab	-	3 Year	Calibration Lab	06.10.2019	05.10.2022	+/-0.02	030
28	F2716C019	GLOSS METER	0-199.9-2.000 GU	AADARSH	QA Lab	0.1 GU	5 Year	Calibration Lab	22.05.2017	21.05.2022	+/-2 GU	31
29	CC1273	Colour cabinet	230 V, 1 Amp	Raj Scientific company	QA Lab		3 Years	Calibration Lab	18.11.2019	17.11.2022		41
30	BTPL/TAP	Tapper Scale	1-15 mm	Kristeel	QA Lab	0.1 mm	2 Year	Calibration Lab	09.03.2020	08.03.2022	-	32
31	BTPL/PG/02	Pin Gauge	2.50 , 3.10 , 3.20 , 3.30 , 4.20 , 4.30 , 4.40	Accurate Calibration	QA Lab		3 Year	Calibration Lab	19.09.2019	18.09.2022		33
32	BTPL/DVC/01	Digital Vernier Caliper	0-200 mm	BAKER	TOOL ROOM	0.01 mm	1 Year	Calibration Lab	27.11.2020	26.11.2021	±0.02MM	34
33	BTPL/TPG/03	Thread Gauge	M10*1.5 - 6H	BAKER	QA Lab	-	1 Year	Calibration Lab	06.03.2021	05.03.2022	-	35
34	612192011	Digital Vernier Caliper	0-600 mm	Insize	QA Lab	0.01 mm	1 Year	Calibration Lab	03.10.2020	02.10.2021	±0.02MM	36
35	BTPL/SP/02	Surface Plate	1000x1000	Luthra	Firewall Inspection	-	1 Year	-	02.01.2021	01.01.2022	0 grade	37
36	72101972	External Micrometer Point Anvils	0-25 mm	Mitutoyo	QA Lab	0.01 mm	1 Year	Calibration Lab	20.03.2021	19.03.2022	±0.004 mm	39
37	P1060485	Moisture Analyzer	0.001 - 51 gm	JISL	QA Lab	0.001 gm	1 Year	Calibration Lab	15.04.2021	14.04.2022		40
38	2104-017	Ash Content	0-1100C	Innovative	QA Lab	0	1 Year	Calibration Lab	30.06.2021	29.06.2022		41



HEIGHT GAUGE



WEIGHING
BALANCE



MFI TESTER



CMM



VMM



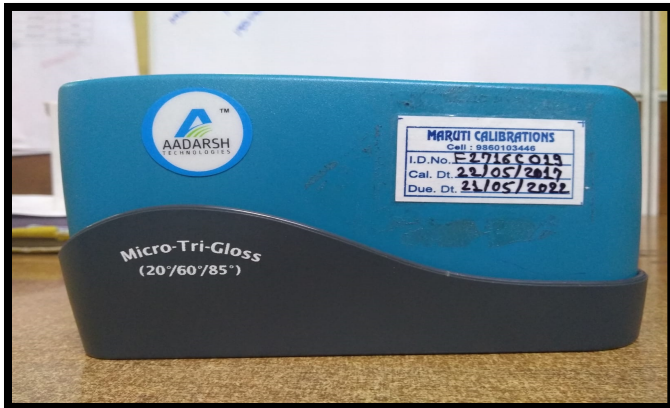
SURFACE PLATE 1000x1000 MM



ASH CONTENT



MOISTURE ANALYZER



GLOSS METER

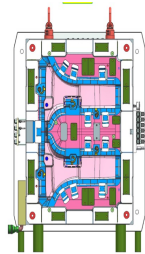
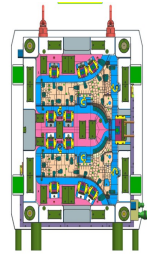
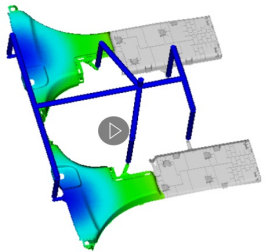


SPECTROMETER



Complete Solutions, Unlocked Advantage

- Bharat Technoplast Pvt Ltd offers a seamless end-to-end manufacturing solution, covering ENGINEERING, PROTOTYPING, DIE DEVELOPMENT, MOULDING, and ASSEMBLIES, all under one roof.
- Our comprehensive approach, combined with Capacity, Capability, Competitiveness, and a skilled Technical Team, ensures top-notch quality.
- With expertise in Tool Localization and a focus on diverse tool development we deliver Zero Defect outcomes in Mass Production & Assemblies.
- Choose us for precision, efficiency, and a commitment to excellence in every step of the manufacturing process.



Prototyping, Simulation & Designing

Tool Manufacturing

Injection Moulding & Assemblies

- Having the requisite expertise, infrastructure and capacity we also provide services for

- Modification of existing mould (ECN)
- Repair of mould on priority
- Refurbishing of moulds
- Proto/Soft tool manufacture

- Quality Target

- T-0 : 80% to 90% PIST
- T-1 : 100 % PIST & OK TO GRAIN quality parts
- T-2 : Grain approval trial
- Final Buy–OFF trial



Complete Solutions, Unlocked Advantage

- Our commitment to the "**Make in India**" initiative is rooted in delivering international quality at competitive prices.
- With a solution-focused approach, we proudly offer a **One Stop Solution** for Small, Medium, and Large Size molds.
- Our **transparent pricing**, coupled with a **dedicated and experienced team**, ensures not only timely deliveries but also continuous improvement in our products.
- **Embracing efficiency**, we aim to contribute to India's global manufacturing prominence, offering businesses a reliable partner for their mold requirements.
- Our commitment to "**First Time Right**" ensures unparalleled quality in every mold we produce. Leveraging advanced machining techniques, we uphold stringent stage inspections, guaranteeing precision at every step.
- By **eliminating manual work** on parting surfaces and eschewing rework and welding, we deliver molds of exceptional quality.
- Choose us for **precision, efficiency, and a commitment** to delivering top-notch molds right from the first attempt.
- With an **in-house trial and production facility** capable of handling up to 2300T, we stand ready to meet diverse manufacturing needs.
- Our **streamlined process** ensures swift turnaround times:
 - <500mm: 3-4 weeks
 - 500-800mm: 4-7 weeks
 - 800-1200mm: 7-9 weeks
 - 1200-1500mm: 9-12 weeks





TOOLING

MR. BHARAT SHAH, DIRECTOR

Contact: 91- 9819172877

IMM

MR. RUSHAB SHAH, DIRECTOR

Contact: 91-9819417477

OPERATIONS

MR. RAHUL SHAH, DIRECTOR

Contact: 91-9819172877

Website:

www.bharattechnoplast.com

E-Mail Address:

info@bharattechnoplast.com



THANK YOU